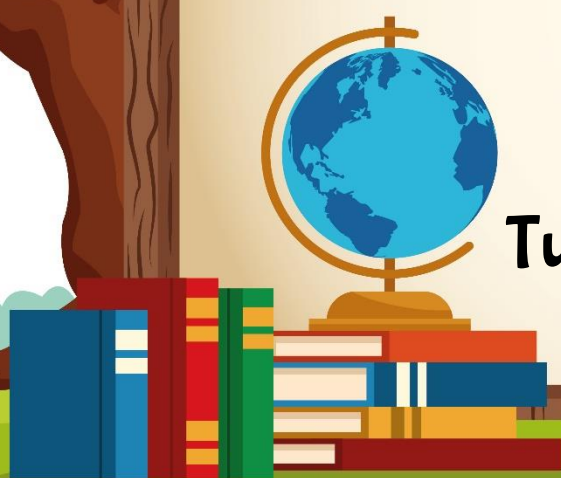




Brighton PS & CDE

Parent Information Night

Tuesday 13/2/24
in classrooms



Parents and Carers are invited to come along
and meet their child's teacher.

*Limited supervision for children enrolled at Brighton PS & CDE on
the Green and Gold Playground.*

Program

5.00–5.30	5.30–6.00	6.00–6.30
Foundation (3.1 3.2 3.3 3.4)	Year 1 (4.3 4.4 4.5 4.6)	Year 5 (2.5 2.7 2.8)
Year 5/6 (6.1 6.2 6.3 6.4)	Year 2/3 (4.1 4.2 4.7 4.8)	Year 3 (1.3 1.4 1.5)
Year 4 (2.9 2.10 2.11)		