

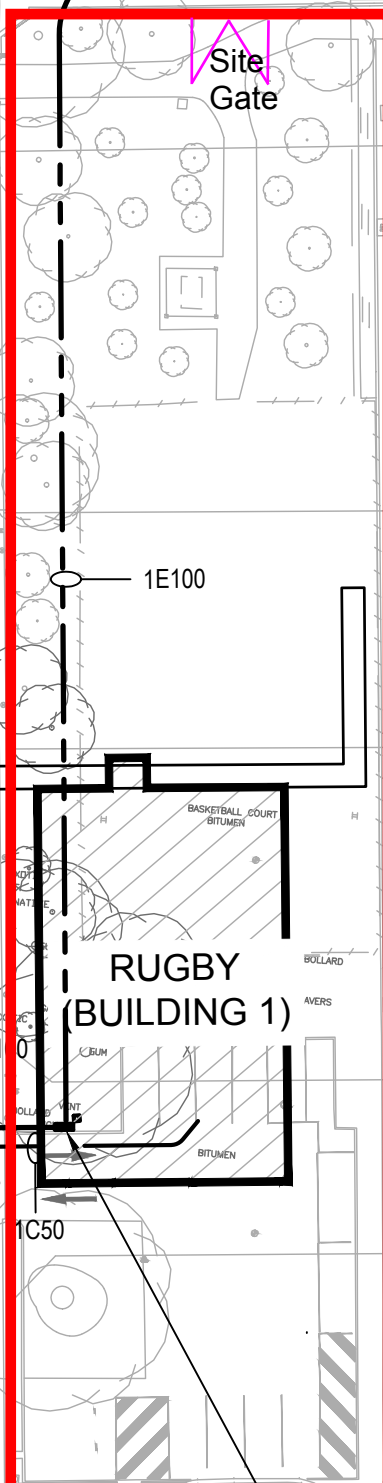
STOPFORD ROAD

BRIGHTON ROAD

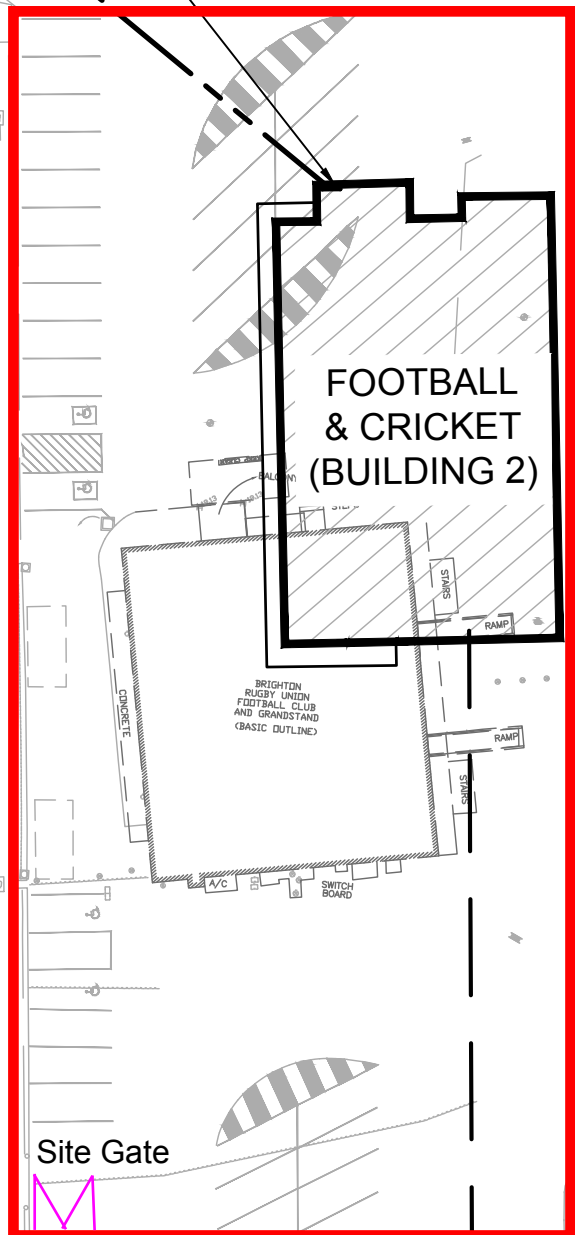
NEW MAIN DISTRIBUTION BOARD (MDB.2)

Contractor Carpark

Site Gate

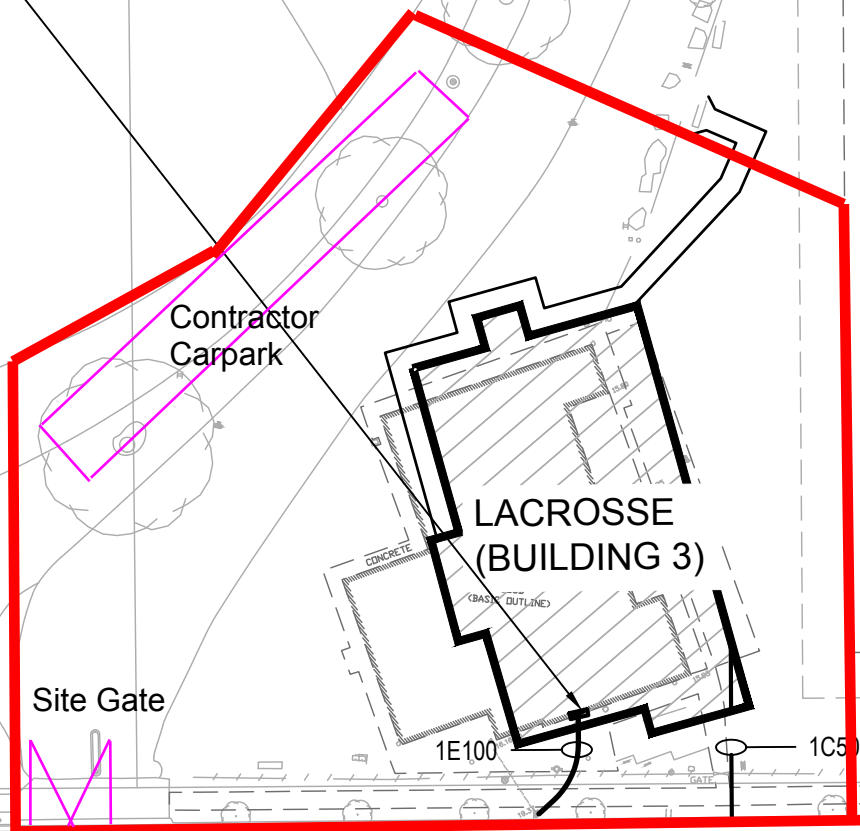


FOOTBALL & CRICKET (BUILDING 2)



NEW MAIN DISTRIBUTION BOARD (MDB.3)

Contractor Carpark



LACROSSE (BUILDING 3)

NEW MAIN DISTRIBUTION BOARD (MDB.1)

HIGHT AVENUE

HIGHT AVE.

HIGHT AVENUE

DRAWING INDEX

- E-01 SITE PLAN
- E-02 ELECTRICAL SINGLE LINE & TELECOMMUNICATIONS SCHEMATIC DIAGRAMS & LEGEND OF SYMBOLS
- E-03 RUGBY CLUBROOMS (BUILDING 1) - GROUND & FIRST FLOOR POWER, COMMUNICATIONS, SECURITY, LUMINAIRE & FIRE DETECTION ARRANGEMENTS
- E-04 FOOTBALL & CRICKET CLUBROOMS (BUILDING 2) - GROUND & FIRST FLOOR POWER, COMMUNICATIONS, SECURITY, LUMINAIRE & FIRE DETECTION ARRANGEMENTS
- E-05 LACROSSE CLUBROOMS (BUILDING 3) - GROUND & FIRST FLOOR POWER, COMMUNICATIONS, SECURITY, LUMINAIRE & FIRE DETECTION ARRANGEMENTS

NOTES

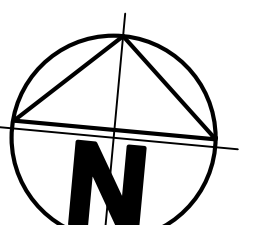
1. EXACT ROUTES OF CONDUITS TO BE DETERMINED ON SITE.

BESTEC
DOCUMENT ISSUE
Date
24-Jun-19
BESTEC
ABN 43 909 272 047
BUILDING ENGINEERING
SERVICES TECHNOLOGIES
CONSULTING ENGINEERS


CONSTRUCTION ISSUE

Issue	Amendments	Date	Init.
A	ISSUE FOR BUILDING RULES CONSENT	27.05.19	SM
B	ISSUE FOR BUILDING RULES CONSENT	03.06.19	DT
C	ISSUE FOR PREPARATION OF CONSTRUCTION DRAWINGS	24.06.19	RM

North



Architect



BESTEC®

BESTEC
 ABN 43 909 272 047
 T. (08) 8232 4442
 F. (08) 8232 4244
 E. consulting@bestec.com.au
 A. 144 Gawler Place
 Adelaide, 5000
 South Australia
 G.P.O. Box 816,
 Adelaide 5001
 W. bestec.com.au

Project	BRIGHTON OVAL REDEVELOPMENT	Drawn	RM	Checked	<i>Hall</i>	Date	FEB 2019
Title	ELECTRICAL SERVICES	Designed	PRK	Checked	<i>Hall</i>	Scale	1:500 @A1
	SITE PLAN	Drawing Number	E-01	Sheet	5	Issue	C

P:\15099\Drawings\ELEC\56098 E-01.dwg 24/06/2019 11:00:00 AM ross.mcf.fairlane